

ROSSETTI



8 251 WEST 14TH STREET

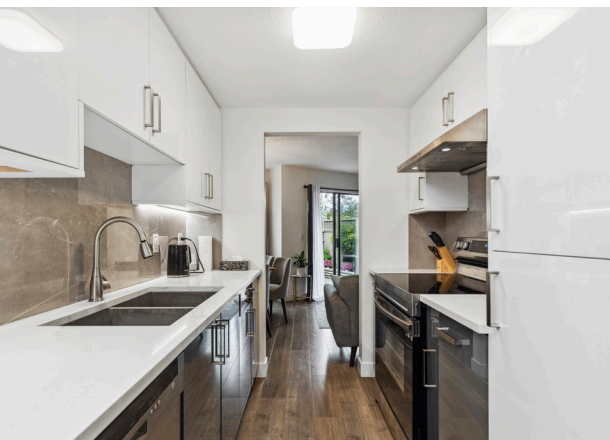
CENTRAL LONSDALE, NORTH VANCOUVER



UPDATED 3 BDRM TOWNHOME AT 'THE TIMBERS'

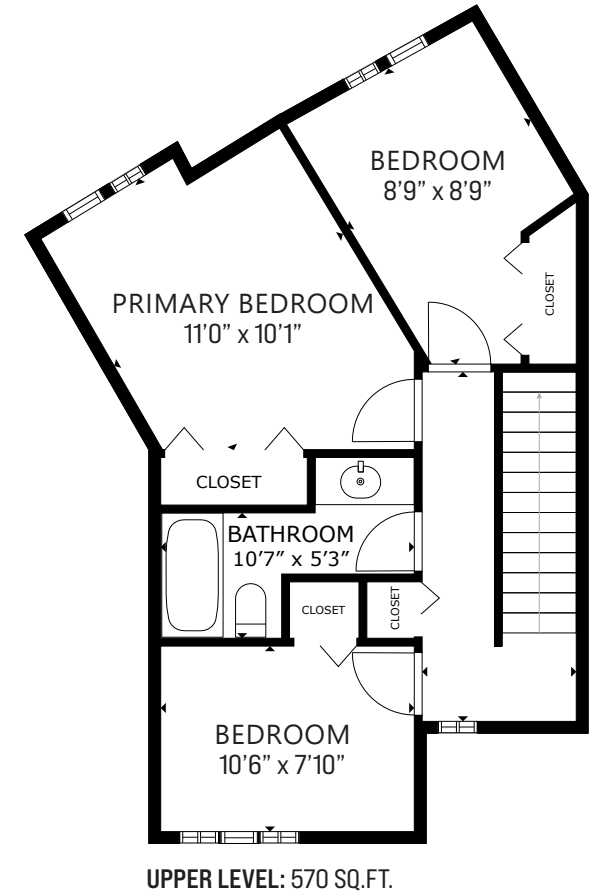
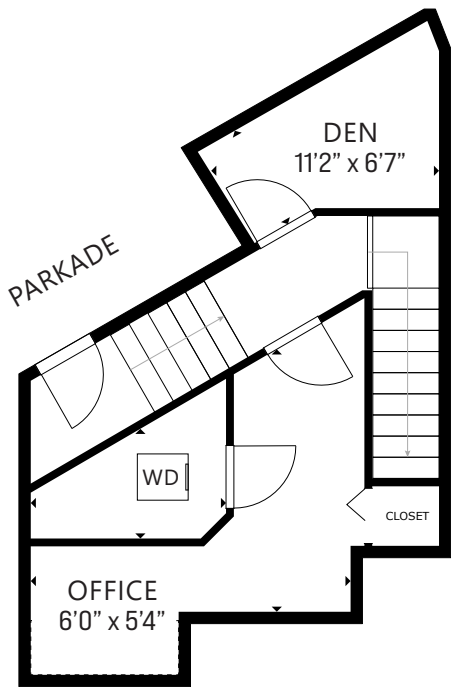
3 Beds | 2 Baths | 1,431 Sq/Ft

■ Updated 3 bedroom townhome at 'The Timbers' in the heart of Central Lonsdale. Offering over 1,400 sq/ft across three levels plus a sunny, west facing patio/deck off the main for terrific indoor/outdoor living. Featuring a tastefully renovated kitchen with sleek new cabinets, quartz counters, and stainless appliances. The open plan living/dining room includes a wood burning fireplace with updated tile surround, built-in floating shelves, and sliders to the west facing patio. The patio is a great size for entertaining with an elevated deck dining area, plenty of space for a BBQ and additional seating, and includes a small raised bed garden. Completing the main is a 2-piece powder room. The upper level offers a 4-piece bathroom and 3 bedrooms including a spacious primary. The lower level includes a den/storage room, flexible use sitting area/office (with skylight), a separate laundry area, and direct access to the underground parking. On a quiet, low traffic street and yet conveniently just steps to all Central Lonsdale amenities and transit options. Walk to Queen Mary Elementary and Carson Graham Secondary (with IB program), access trails and fields at Mahon Park, and enjoy access to all the shopping and dining options along the vibrant Lonsdale corridor including Whole Foods, City Market, and more.





ROSSETTI



Layout, measurements, and square footage from Matterport. Strata Plan shows 1,399 sq/ft. Layout & dimensions are approximate and not guaranteed. Information should not be relied upon without independent verification. This communication is not intended to cause or induce breach of an existing agency agreement.