

ROSSETTI



1003 140 EAST KEITH ROAD

CENTRAL LONSDALE, NORTH VANCOUVER



BEAUTIFULLY RENO'D 'KEITH 100' NE CORNER SUITE

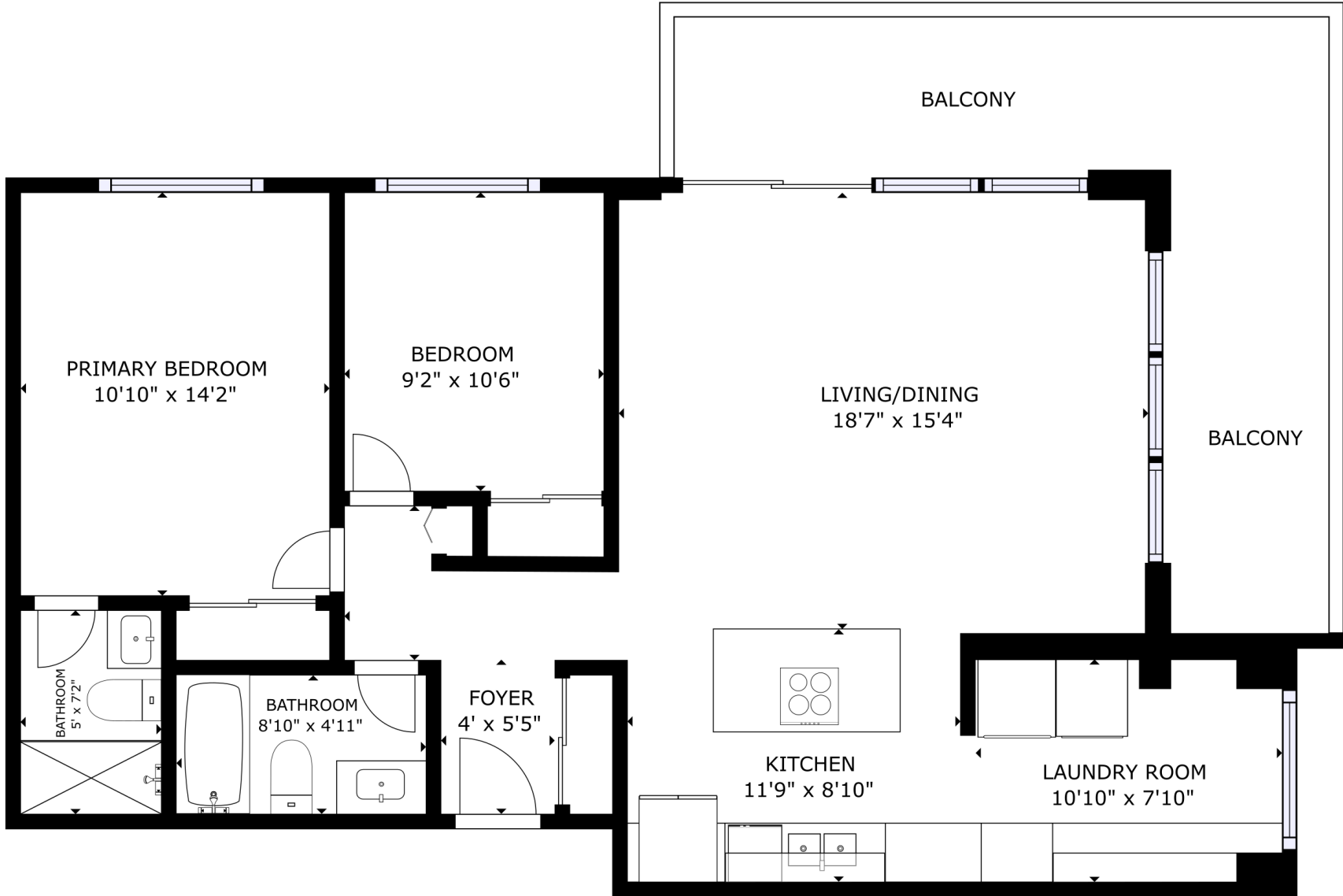
2 Beds | 2 Baths | 964 Sq/Ft

■ Beautifully renovated northeast corner suite at 'Keith 100'. Offering 2 bedrooms, 2 bathrooms, and 964 sq/ft with tasteful, modern updates throughout. The open-concept layout features floor-to-ceiling windows that infuse the space with natural light, enhancing the bright, airy atmosphere. The spacious living and dining area flows seamlessly onto an over 200 sq/ft wrap-around balcony, perfect for outdoor dining and offering serene mountain and inner harbor views. The contemporary kitchen boasts sleek white cabinets and stainless-steel appliances, including a built-in oven and microwave. The central island, equipped with a cooktop and bar stool seating, invites casual dining and entertaining. Adjacent to the kitchen is a well-appointed laundry room that provides additional cabinets, counter space, and a side-by-side washer/dryer, all enhanced by a rare laundry room window. The two bedrooms are a generous size including the large primary with room for a King bed plus wardrobes, large closet, and a stylish 3-piece ensuite. The second bedroom is great for family/kids, as an office, or a guest room. Includes 1 parking and a storage locker. In the well-regarded 'Keith 100,' a concrete building with just 4 suites per floor, a gym, meeting room, and visitor parking. Set in a convenient central location on Victoria Park, with all Lonsdale amenities close by including transit, Civic Plaza & the library, Whole Foods, Lions Gate Hospital, the Lonsdale Quay, and more.





ROSSETTI



Interior square footage from strata plan. Layout and measurements by Matterport. Square footage, room measurements, & dimensions are approximate and not guaranteed. Information should not be relied upon without independent verification. This communication is not intended to cause or induce breach of an existing agency agreement.