

ROSSETTI



308 1330 MARINE DRIVE

PEMBERTON, NORTH VANCOUVER



SPACIOUS END-UNIT AT 'THE DRIVE'

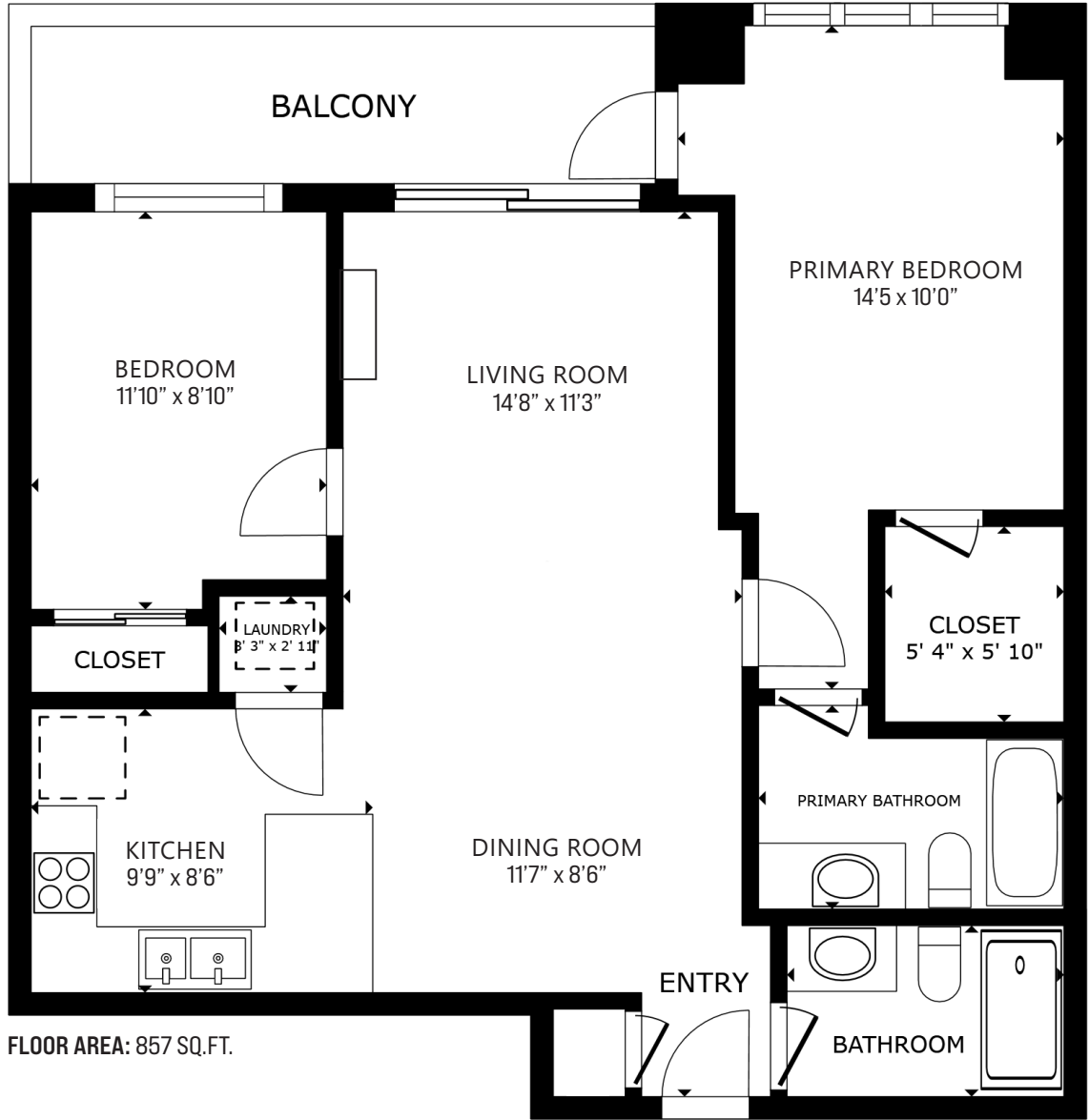
2 Beds | 2 Baths | 857 Sq/Ft

■ Spacious end-unit 2 bdrm/2 bath in 'The Drive'. Set on the quiet, cool side of the building, this well-designed suite offers over 850 sq/ft plus an over 100 sq/ft balcony with a peaceful treed outlook. The kitchen offers quartz countertops, stainless appliances including a gas cooktop, and plenty of cabinet and counter space. The open plan dining/living space offers engineered hardwood floors, an electric fireplace, and sliders to the generous sized balcony. The two bedrooms are well separated and include a spacious primary suite with a 4-piece ensuite, large walk-in closet, and direct access to the balcony. Completing the home is the second bedroom and a 3-piece bathroom. Includes in-suite laundry and a secured parking stall. Two pets allowed. The Drive offers a well-equipped gym, bike storage, and visitor parking. In a terrific central location with a Walk Score of 88! Enjoy all amenities at your doorstep including transit service across the North Shore and to downtown, and just steps to shopping, dining, and trails through Barbour Park.





ROSSETTI



Interior square footage from strata plan. Layout and measurements from Matterport.
Square footage, room measurements, & dimensions are approximate and not guaranteed.
Information should not be relied upon without independent verification.
This communication is not intended to cause or induce breach of an existing agency agreement.