

**ROSSETTI**



**414 333 EAST 1ST STREET**

**LOWER LONSDALE, NORTH VANCOUVER**





# TOP FLOOR 1 BDRM OVERLOOKING HAMMERSLEY PARK

1 Bed | 1 Bath | 640 Sq/Ft

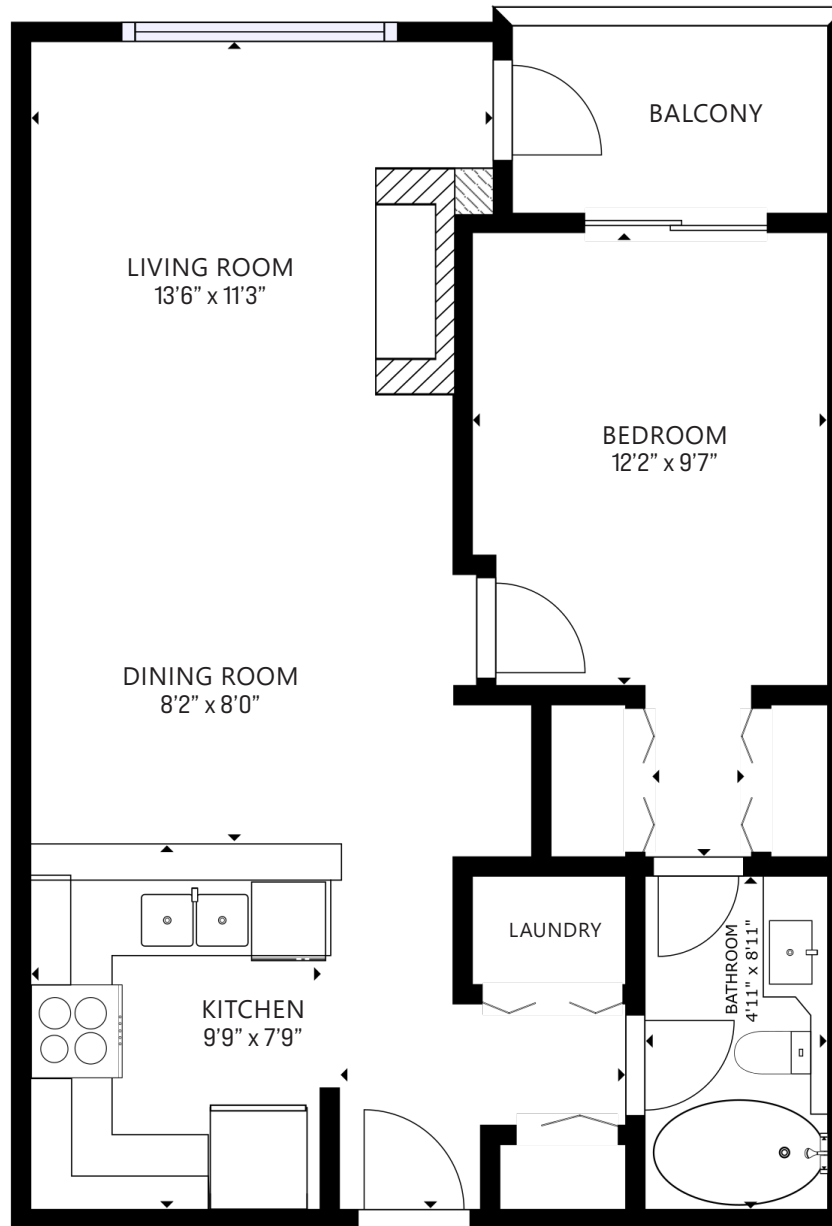
■ Rarely available top floor 1 bedroom at Vista West. This inviting residence offers a tranquil, private setting with picturesque views of Hammersley Park, creating a peaceful retreat in the heart of the city. The spacious layout is enhanced by impressive 11-foot vaulted ceilings, adding an airy, expansive feel. The open plan living/dining room features a cozy gas fireplace, large windows overlooking the park, and access to a BBQ-friendly balcony, great for summertime enjoyment. The well-appointed kitchen features ample cabinetry, generous counter space, a convenient breakfast bar, and stainless-steel appliances. The comfortable primary bedroom boasts sliding doors to the balcony, perfect for enjoying a morning coffee. Dual closets provide ample storage and connect directly to the semi-ensuite 4-piece bathroom for added privacy and functionality. Additional highlights include a dedicated computer nook, in-suite laundry, 1 secure parking stall, and a storage locker. This well-regarded building is set on a quiet, tree-lined street in the vibrant Brewery and Shipyard District of Lower Lonsdale. Enjoy easy access to a variety of restaurants, boutique shops, transit, and the Spirit Trail, all within walking distance. Don't miss the chance to experience this perfect blend of comfort, convenience, and charm!











FLOOR AREA: 640 SQ.FT.

Interior square footage from strata plan. Layout and measurements by Matterport. Square footage, room measurements, & dimensions are approximate and not guaranteed. Information should not be relied upon without independent verification. This communication is not intended to cause or induce breach of an existing agency agreement.