

**ROSSETTI**



**801 1555 EASTER AVENUE**

**CENTRAL LONSDALE, NORTH VANCOUVER**



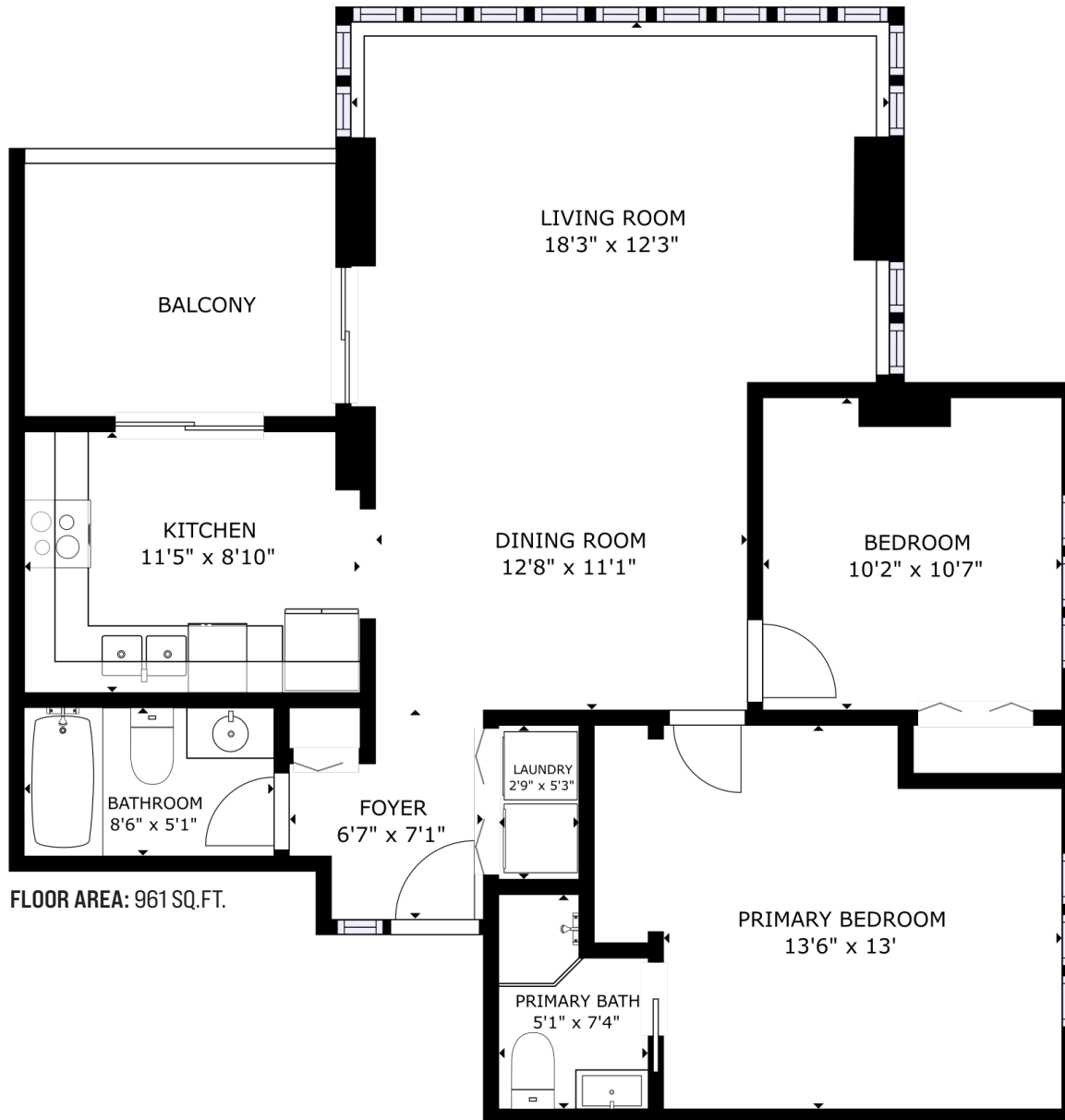
# NORTHWEST CORNER SUITE AT 'THE SOVEREIGN'

2 Beds | 2 Baths | 961 Sq/Ft

■ Northwest corner suite at 'The Sovereign' in the heart of Central Lonsdale. This bright and inviting home offers 2 bedrooms, 2 bathrooms, and 961 sq/ft of well-designed living space, featuring expansive views of the Lonsdale skyline, ocean, and iconic Lions peaks. The practical layout includes spacious rooms throughout, including an open-concept living and dining area that is filled with natural light from an abundance of windows that highlight the surrounding views. Sliding glass doors open to a west-facing covered balcony, a great spot to enjoy your morning coffee or unwind with an evening meal while overlooking the city lights. The kitchen is a comfortable size and includes stainless appliances, plus easy access to the covered balcony. The primary bedroom features a large closet, ample space for added wardrobes, and has a 3-piece ensuite. The second bedroom is great for family, as an office, or a guest room. Completing the home is a 4-piece bathroom and a large laundry closet. Includes 1 secured parking space and a storage locker. The Sovereign is a well-regarded building in a prime Central Lonsdale location, offering convenient access to local amenities. City Market is steps away, with an off-leash dog park across the street, and the hospital, Library Square, Whole Foods, and a variety of shops and restaurants all within walking distance.







Interior square footage from strata plan. Layout and measurements from Matterport. Square footage, room measurements, & dimensions are approximate and not guaranteed. Information should not be relied upon without independent verification. This communication is not intended to cause or induce breach of an existing agency agreement.