

ROSSETTI

910 2016 FULLERTON AVENUE

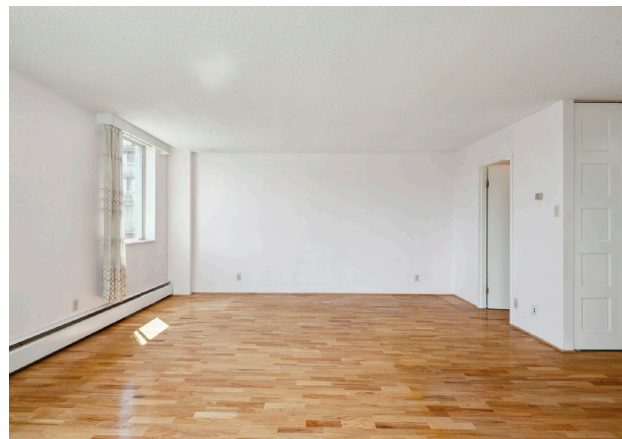
PEMBERTON, NORTH VANCOUVER



SOUTH FACING STUDIO IN WOODCROFT'S LILLOOET BUILDING

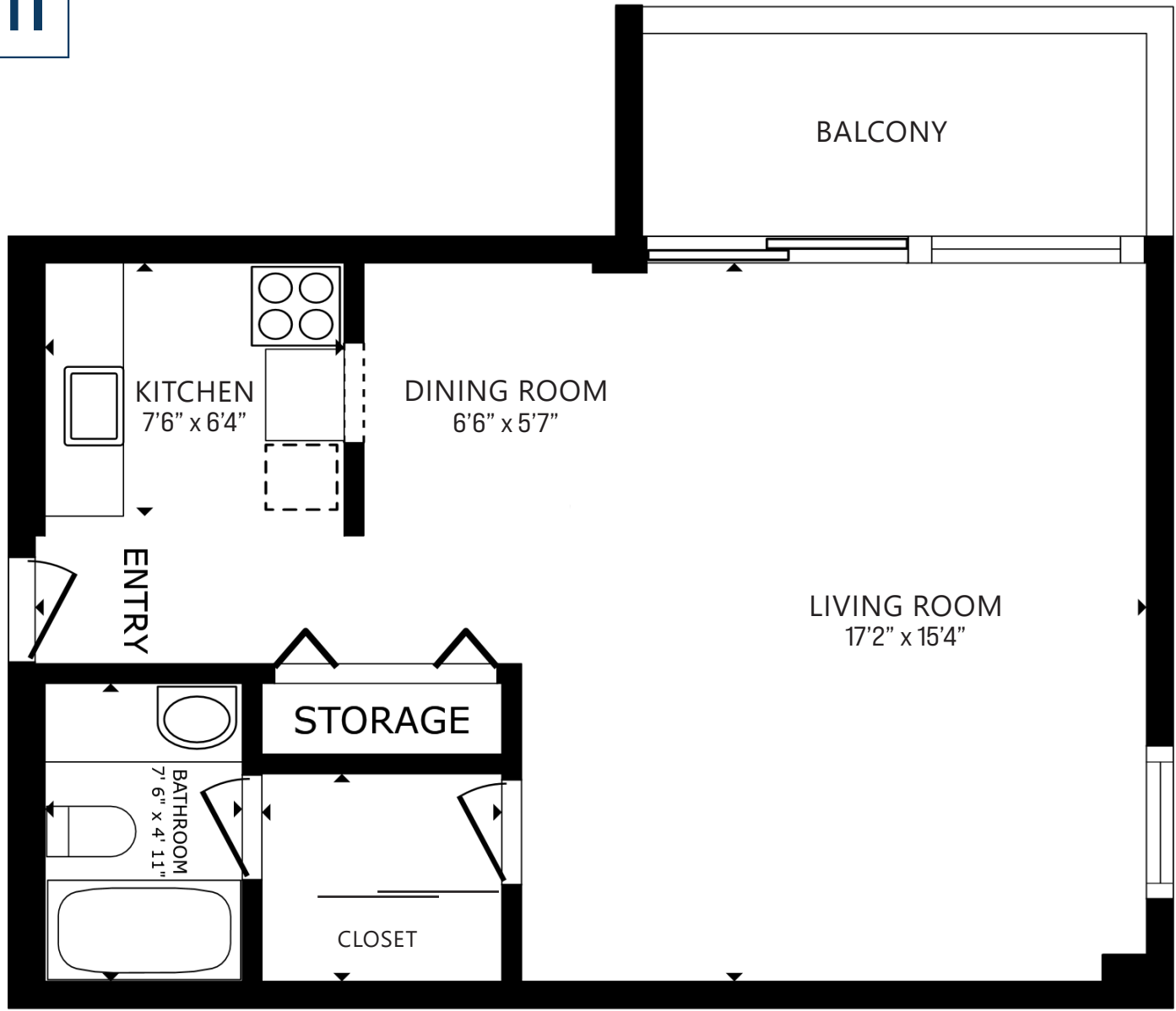
Studio | 1 Bath | 531 Sq/Ft

■ Rarely available south facing studio suite in the Lillooet Building at Woodcroft Estates. The home is in clean, yet original condition and is a great opportunity for someone to update and enjoy, or buy and hold for investment. Featuring a practical galley style kitchen with windowed pass through to the dining area and a large open plan living space. The living area includes a south facing window with partial city views and sliders to an east facing balcony that overlooks the soon to be completed new improved landscaping. Completing the home is a walk-through closet, 4-piece bathroom, and large entry closet. Woodcroft Estates is set on 13 acres of private, treed land fronting onto the Capilano River, and features terrific resort style amenities including 24/7 gated security, indoor pool, gym, sauna, workshop, and games room. 1 cat allowed & rentals min 30 days. Great central area with all amenities just a short walk or drive to the new Lions Gate Village, Marine Drive shops and restaurants, Park Royal Shopping mall, West Van sea walk, and with easy access to downtown from the Lions Gate Bridge.





ROSSETTI



531 SQ.FT.

Interior square footage from strata plan. Layout and measurements by Matterport. Square footage, room measurements, & dimensions are approximate and not guaranteed. Information should not be relied upon without independent verification. This communication is not intended to cause or induce breach of an existing agency agreement.