

ROSSETTI



406 108 W ESPLANADE

LOWER LONSDALE, NORTH VANCOUVER



STUNNING CITY VIEW PENTHOUSE

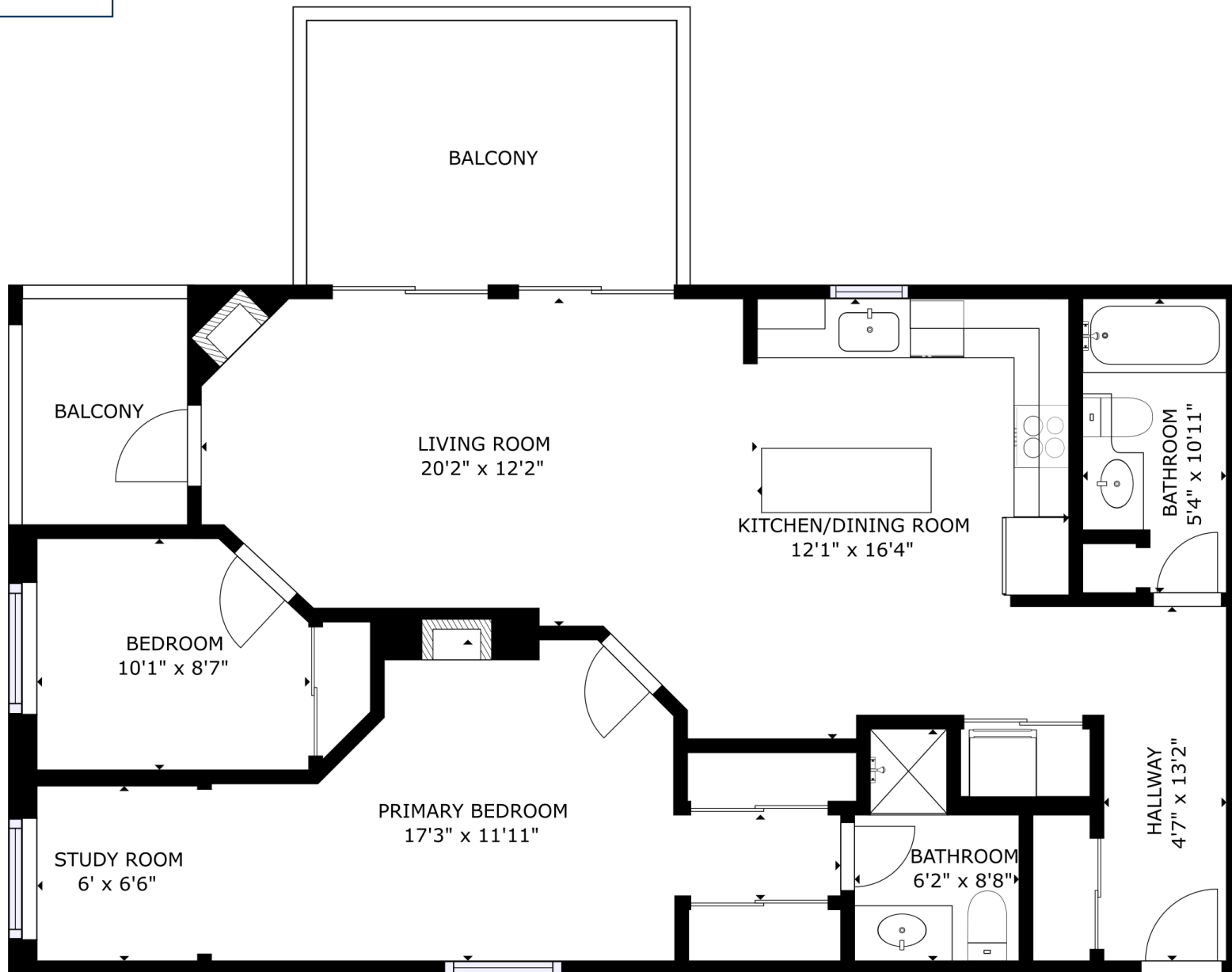
2 Beds | 2 Baths | 1,111 Sq/Ft

■ Discover the perfect blend of comfort, convenience, and style in this exceptional air-conditioned penthouse in vibrant Lower Lonsdale. Offering 2 bedrooms, 2 bathrooms, and over 1,100 sq/ft of thoughtfully designed interior space, this corner home is filled with natural light and offers breathtaking views of the city and inner harbour. The south-facing main living area is a showstopper, with an open-plan layout framed by an abundance of windows that maximize both the light and the views. A cozy gas fireplace anchors the space, creating a warm and inviting atmosphere, while sliding glass doors lead to a spacious balcony, perfect for al fresco dining or unwinding with the sparkling city lights as your backdrop. A second, more private southeast-facing balcony provides the perfect retreat for your morning coffee. The beautifully updated kitchen boasts quartz countertops, a striking herringbone backsplash, stainless steel appliances, and a movable island for versatility. A window above the sink brings in natural light and frames yet another view to enjoy while cooking. The primary suite is a true sanctuary, featuring a rarely available gas fireplace, two closets, a 3-piece ensuite, and a seating area - ideal for a private reading nook or office. Completing the home is a second bedroom, a 4-piece bathroom, and the convenience of in-suite laundry. Additional features include wide plank oak flooring, retractable awning, one parking stall, and a storage locker. Situated in the Tradewinds building with a Walk Score of 94, putting you just steps from the Shipyards, Lonsdale Quay Market, the Brewery District, Waterfront Park, the Spirit Trail, transit, and a variety of shops and restaurants. Embrace the lifestyle you've been dreaming of in this exceptional penthouse, where incredible views and modern comfort come together in perfect harmony.





ROSSETTI



INTERIOR: 1,111 SQ.FT.

Layout, square footage, and measurements, by Matterport, are approximate and not guaranteed. Information should not be relied upon without independent verification. Strata plan size: 97.0 square metres. This communication is not intended to cause or induce breach of an existing agency agreement.